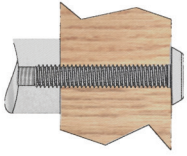


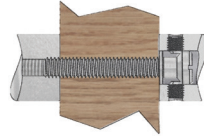
MOUNTING METHODS



E-MOUNT

THRU-BOLT & FINISH WASHER

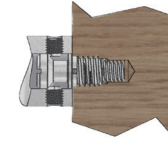
3/4" DIA. OR LESS: 1/4-20 THREAD
 1" DIA. OR MORE: 5/16-18 THREAD
 RIGHT HAND THREAD (RHT) STANDARD
 LEFT HAND THREAD AVAILABLE
 3/18-16 THREAD AVAILABLE



G-MOUNT

BACK-TO-BACK

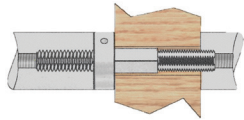
THREADED SHOULDER BOLT & SET SCREWS (X2)
 3/4" DIA. OR LESS: 1/4-20 THREAD
 1" DIA. OR MORE: 5/16-18 THREAD
 SPECIAL SHOULDER BOLTS AVAILABLE



J-MOUNT

CONCEALED MOUNTING

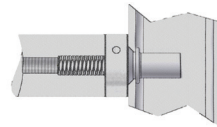
THREADED SHOULDER BOLT & SCREW SET (X2)
 3/4" DIA. OR LESS: 1/4-20 THREAD
 1" DIA. OR MORE: 5/16-18 THREAD
 SPECIFY METAL OR WOOD DOORS
 SPECIAL SHOULDER BOLTS AVAILABLE



L-MOUNT

BACK-TO-BACK CONCEALED MOUNTING

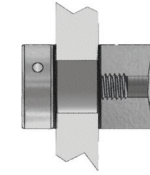
SPANNER TURNING WASHER & STUD FOR
 ROUND BASES
 SPECIFY METAL, WOOD, OR GLASS DOORS



M-MOUNT

CONCEALED MOUNTING

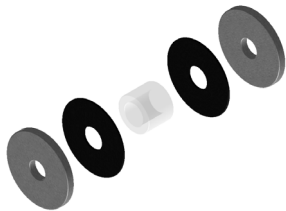
SPANNER TURNING WASHER & SINGLE MOUNT
 FOR ROUND BASES
 SPECIFY METAL OR WOOD DOORS



N-MOUNT

THRU-BOLT WITH FLOW-THRU BUTTON

SINGLE MOUNT FOR ROUND BASES
 RIGHT HAND THREAD (RHT) STANDARD
 LEFT HAND THREAD (LHT) AVAILABLE
 SPECIFY METAL, WOOD, OR GLASS DOORS



GLASS KIT

W-MOUNT

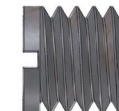
INCLUDES CLEAR SPACER, 2 FELT WASHERS & 2 BACK PLATES
 SPECIFY GLASS THICKNESS & HOLE DIAMETER
 REQUIRES MOUNTING KIT (I.E. N-MOUNT)



RIV-NUT

RIV-NUT

FOR J OR M MOUNTING ON ALUMINUM DOORS
 R3: 1/4-20 THREAD
 R4: 5/16-18 THREAD
 R5: 3/8-16 THREAD



BUSHING

WOOD THREAD TO MACHINE THREAD

FOR J OR M MOUNTING ON WOOD DOORS
 B3: 1/4-20 THREAD
 B4: 5/16-18 THREAD
 B5: 3/8-16 THREAD