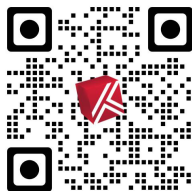


# Trimco®

SINCE 1949

TRIANGLE BRASS MANUFACTURING  
1351 ROCKY POINT DRIVE  
OCEANSIDE, CA 92056  
WWW.TRIMCOHARDWARE.COM  
CSR@TRIMCOHARDWARE.COM  
323.262.4191



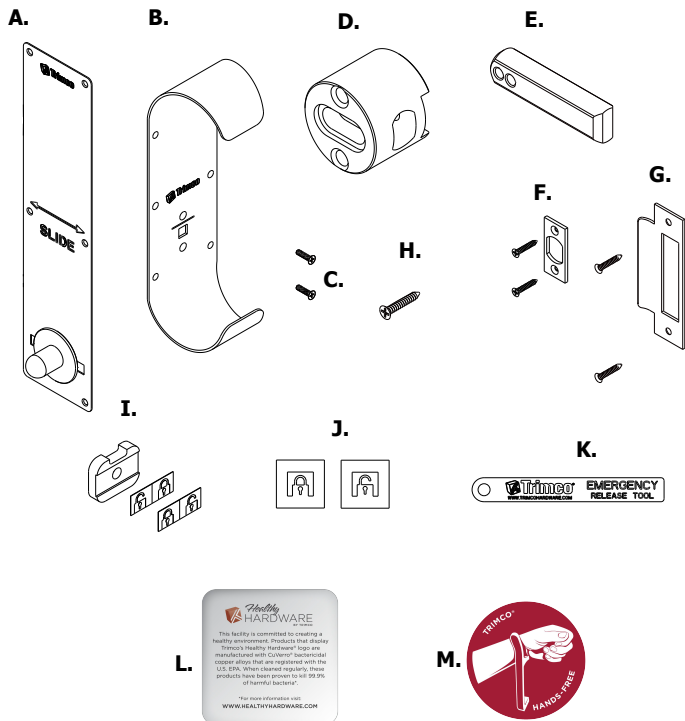
## PARTS LIST

\*NOT TO SCALE\*. IF ANY PARTS ARE MISSING,  
PLEASE CONTACT TRIMCO CUSTOMER SERVICE.

### BOX 1 ITEMS

- (A) 1X INTERIOR ASSEMBLY
- (B) 1X EXTERIOR PULL
- (C) 1X EXTERIOR MACHINE SCREWS, 10-24 X 3/4
- (D) 1X CARRIER
- (E) 1X LOCKING BOLT
- (F) 1X LATCH FACE AND SCREWS
- (G) 1X DOOR STRIKE AND SCREWS
- (H) 16X INTERIOR AND EXTERIOR PLATE WOOD/SHEETMETAL SCREWS
- (I) 1X INDICATOR WITH OPEN & CLOSE STICKERS
- (J) 1X INTERIOR OPEN AND CLOSE STICKERS
- (K) 1X EMERGENCY OPEN TOOL
- (L) 1X HH SIGN STICKER (FOR HEALTHY HARDWARE ONLY)
- (M) 1X HANDS FREE STICKER

## PARTS



## TOOLS

TOOLS BELOW MAY BE REQUIRED. TOOLS NOT INCLUDED.

- CROSSHEAD SCREW DRIVER
- PILOT HOLE DRILL (SIZE 3/32)

## OVERVIEW

UHF 212 (OUTSWING VERSION)

## HANDS FREE SLIDE LOCK INSTALLATION GUIDE

FOLLOW THE INSTRUCTIONS BELOW FOR STEP BY STEP INSTALLATION.  
SCAN QR CODE FOR INSTALLATION VIDEO. FOR INSTALLATION HELP,  
PLEASE CONTACT TRIMCO CUSTOMER SERVICE.

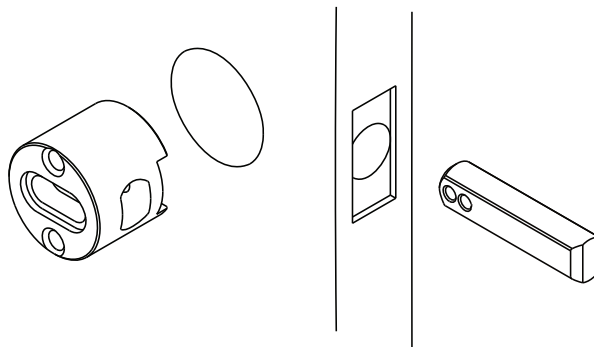
## STEP 1

REMOVE ALL EXISTING DOOR HARDWARE  
INCLUDING THE DEADBOLT IF NEEDED.

### PRO TIP:

NEW INSTALLATIONS FOLLOW ANSI 161 CYLINDRICAL DOOR PREPARATION.  
RETROFIT COMPATIBILITY TO ANSI 161 CYLINDRICAL DOOR PREPARATION.

**NOTE: ONLY COMPATIBLE WITH 1-3/4" THICK DOORS.**

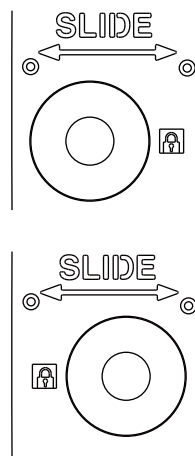


INTERIOR SIDE:  
INSERT CARRIER AS SHOWN.

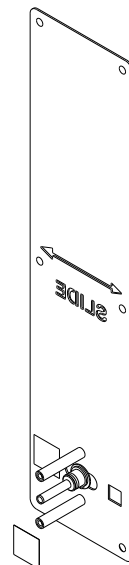
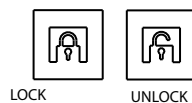
INSERT BOLT INTO CARRIER  
NOTE: HOLES INDICATE  
FOR 2 3/4 OR 2 3/8 DOOR WIDTH  
SEE STEP 2

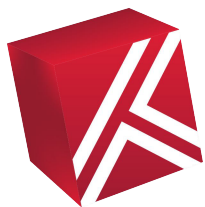
## STEP 2

INSTALL INTERIOR INDICATOR DECALS:  
ADHESIVE IS ON THE GRAPHIC SIDE OF DECAL,  
AND MUST BE INSTALLED ON THE BACK OF THE  
INTERIOR ASSEMBLY TO BE VISIBLE THROUGH  
THE INDICATOR WINDOWS.



**PRO TIP:**  
DEPENDING ON DOOR  
HANDING, CHECK TO SEE  
THAT THE LOCKED DECAL  
IS SHOWN THROUGH THE  
CORRECT INDICATOR  
WINDOW BY SLIDING THE  
BOLT TO THE LOCKED  
POSITION. IF INCORRECT,  
SWITCH DECALS.



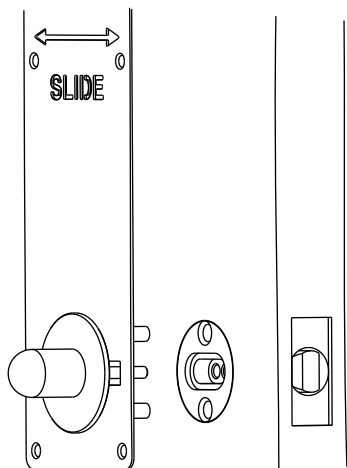


# Trimco®

SINCE 1949

## STEP 3

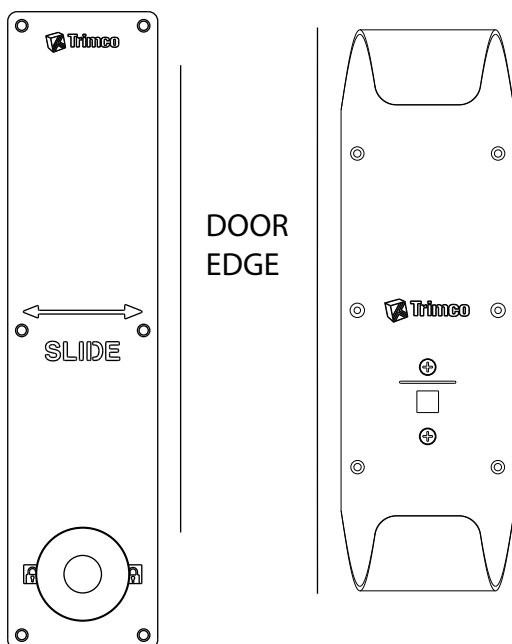
INSTALL INTERIOR ASSEMBLY  
(STUDS THROUGH CARRIER).



**PRO TIP:** USE TAPE TO HOLD ASSEMBLY IN PLACE WHILE THE EXTERIOR IS BEING INSTALLED.

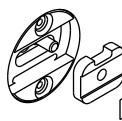
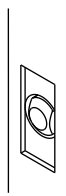
## STEP 5

USE LEVEL OR MEASURE FROM  
DOOR EDGE TO ALIGN INTERIOR  
ASSEMBLY AND EXTERIOR PULL.



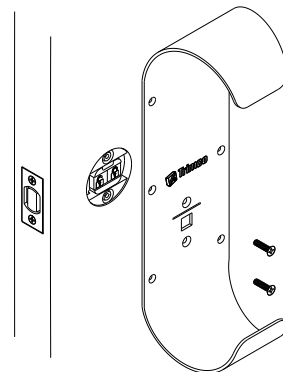
## STEP 4

INSTALL INDICATOR WITH LEFT OR  
RIGHT DECAL, DEPENDING ON  
DOOR HANDING.



CHOOSE THE CORRECT DECAL  
LEFT AND RIGHT HANDED  
DECALS ARE PROVIDED.

INSTALL EXTERIOR PULL  
LOOSELY TO INTERIOR  
ASSEMBLY STUDS. (DO NOT  
TIGHTEN UNTIL PLATES ARE  
ALIGNED TO DOOR).

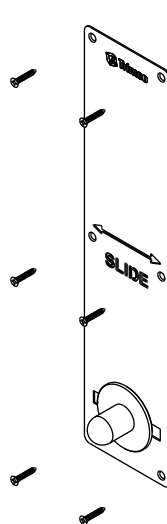
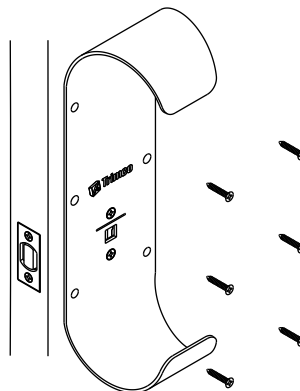


### PRO TIP:

EXTEND LATCH BOLT WHEN TIGHTENING  
OUTER PLATES TO DOOR SURFACE. THIS  
HELPS INSURE ALIGNMENT.

## STEP 6

INSTALL EXTERIOR PULL  
DOOR SCREWS.



INSTALL INTERIOR ASSEMBLY  
MOUNTING SCREWS AND  
LATCH FACE.

### PRO TIP:

TO INSURE PROPER FUNCTION LATCH PLATE  
AND STRIKE MUST BE PROPERLY ALIGNED.