

TEMPLATE NO.

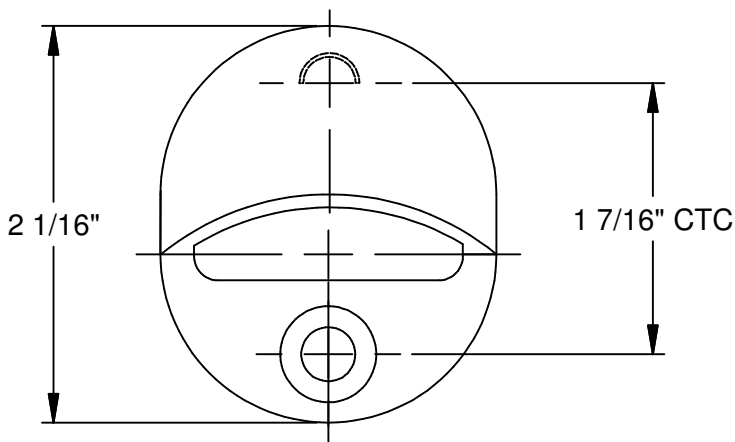
17064
SHT 1 OF 1



3528 Emery Street
PO BOX 23277
Los Angeles, CA 90023-0277
(323)262-4191 www.trimcobbw.com
email:info@trimcobbw.com

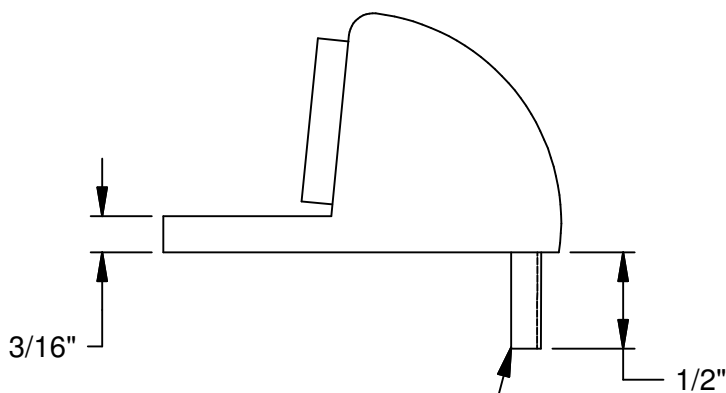
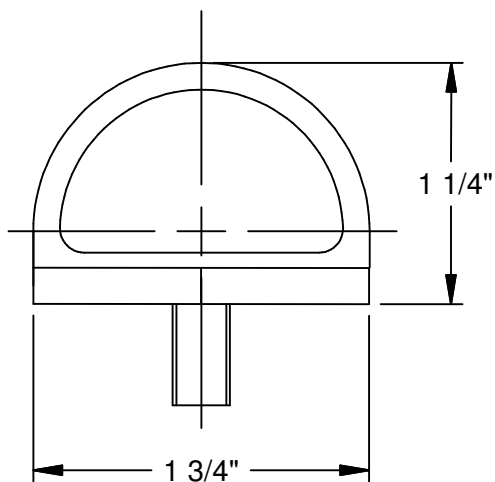
PRODUCT

W1211 UNIVERSAL
DOME STOP



For wood floors: drill 3/16" dia pilot hole for wood screws

For cement floors: drill 1/2" dia x 1 1/4" deep hole for lead anchor and machine screw



Drill 3/8" x 9/16" deep hole for anti-rotation lug
for wood and cement floors

FASTENERS PROVIDED:

- 1 ea 1/4-20 X 1" FH, PH, MS
- 1 ea 1/4-20 Lead Anchor
- 1 ea #14 X 1-1/2" FH, PH, SMS
- 1 ea #14 Plastic Bantam

NOTE:
REPLACEMENT RUBBER AVAILABLE (P/N D1210000073; GREY ONLY)

2-12-13 Revision (JG) supercedes 1-30-13 Revision. Removed carpet risers available notes (only available for our 1211, not W1211)
1-30-13 Revision (JG) supercedes 7-5-12 Revision. W1211 design replaces 1211 design which was inadvertently shown.
7-5-12 Revision (JG) supercedes 4-29-05 Version. Installation verbage added, and "drill 1/4 dia" for anti-rotation lug was "drill 5/8" dia".

NOTE: This template is provided for use only on the job for which is was requested.
Trimco reserves the right to make design changes without notice. Trimco will not be responsible for errors or damage caused by the use of out-of-date templates.

DATE

02/12/13