

NOTES:

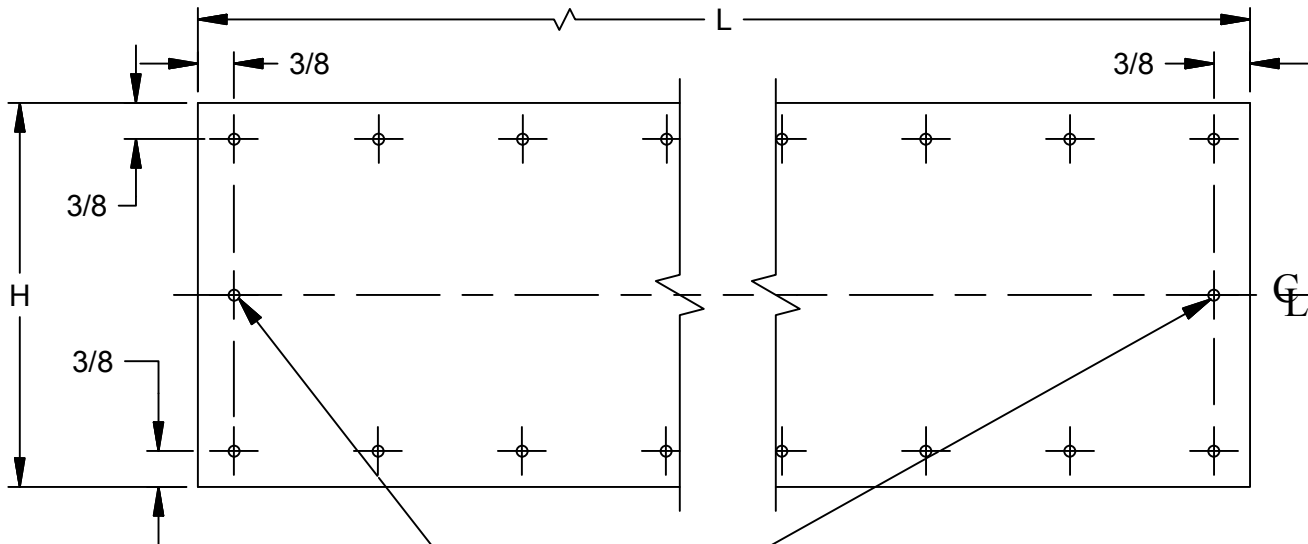
1. FINISH

605, 606, 609  
 611, 612, 613, 616,619  
 628  
 629, 630  
 630EN  
 630  
 PLASTIC

MATERIAL

.050" ALLOY 260 BRASS  
 .050" ALLOY 220 BRONZE  
 .050" ALLOY 5005H 34 ALUMINUM  
 18 GAUGE, STAINLESS STEEL .050"  
 20 GAUGE, STAINLESS STEEL .038"  
 11 GAUGE, STAINLESS STEEL .125"  
 .125" THICKNESS

2. #6 X 5/8 Truss head Phillips head sheet metal screws (for wood or metal doors) are supplied.
3. Screw holes are located 3/8 in from edge, in rows, and are evenly spaced (approximately 5"-6" apart).
4. Do not pre-drill.
5. An additional screw hole is added to each side when height is greater than 12".
6. Pencil beveled is supplied as standard all 4 edges, heavy bevel available upon request (HB4E)
7. Stretcher plate with countersink supplied as standard. #6 X 1/2" OH, PH, undercut sms, other head style screws are available



<u>TRIMCO</u>	<u>TRIMCO</u>
KA038	KM050
KM038	K0050
K0038	KS050
KA050-1	K6000
KA050-2	K0125

— THESE C HOLES ONLY IF H IS GREATER THAN 12

REVISION RECORD:  
 12-18-13 VERSION SUPERCEDED 8-14-13 VERSION  
 CORRECTED TYPPOS AND CLARIFIED NOTES  
 CORRECTED TYPPOS ON TRIMCO PINS K0038 WAS: K0038, K0050,  
 WAS: K0050, ADDED (2) TWO ADDITIONAL HOLES,  
 SGH/JG, 05/27/15

NOTE: This template is provided for use only on the job for which it was requested. Trimco reserves the right to make design changes without notice. Trimco will not be responsible for errors or damage caused by the use of out-of-date templates.

DATE

05/27/15