



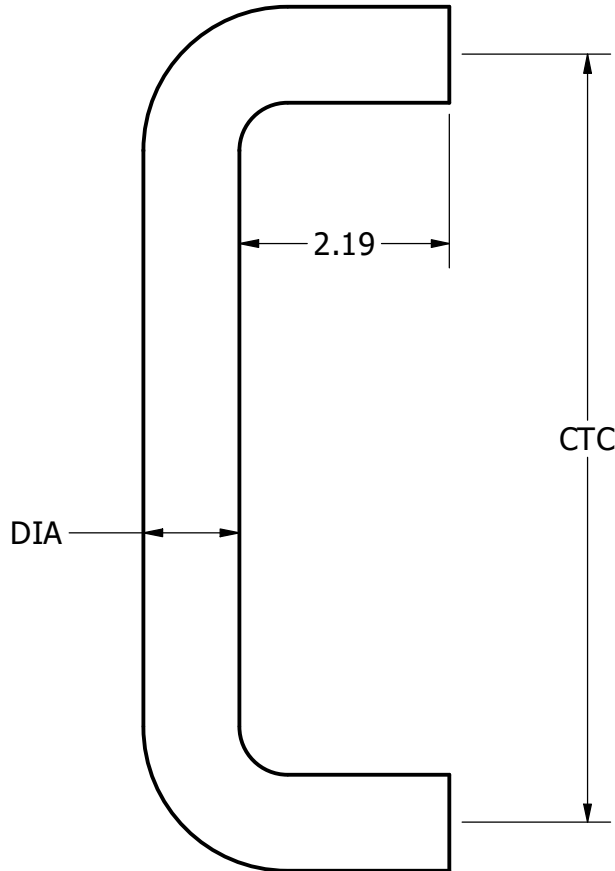
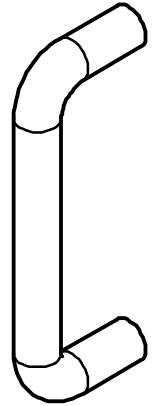
Trimco[®]
SINCE 1949

PRODUCT:

1195 STRAIGHT BENT PULL TEMPLATE

NOTES:

- ALL DIMENSIONS IN INCHES UNLESS SPECIFIED
- MAY NOT BE TO SCALE
- AVAILABLE IN MULTIPLE MATERIALS AND FINISHES
- AVAILABLE FOR MULTIPLE MOUNTING TYPES INCLUDING BTB
- PRODUCT IS PROVIDED WITH 5/16-18 SIZE MOUNTING BOLTS
- CUSTOMER MUST SPECIFY MOUNTING TYPE AND DOOR THICKNESS
- IF DOOR IS GLASS, GLASS KIT IS PROVIDED
- CUSTOMER MUST SPECIFY DOOR HOLE PREP IF GLASS DOOR USED
- BHMA: J401



PART NUMBER FAMILY	DIA	CTC
1195-1	1	8
1195-2	1	10
1195-3	1	12
1195-3J	1.25	12
1195-6	1	18
1195-6J	1.25	18

TEMPLATE# 22181

SHEET

1 OF 1

REVISION# A

APPROVED ON: 7/15/2022

This template is provided for use only on the job for which it was requested. Trimco reserves the right to make design changes without notice. Trimco will not be responsible for errors or damage caused by the use of out-of-date templates.

TRIANGLE BRASS MANUFACTURING
1351 ROCKY POINT DRIVE
OCEANSIDE, CA 92056
WWW.TRIMCOHARDWARE.COM