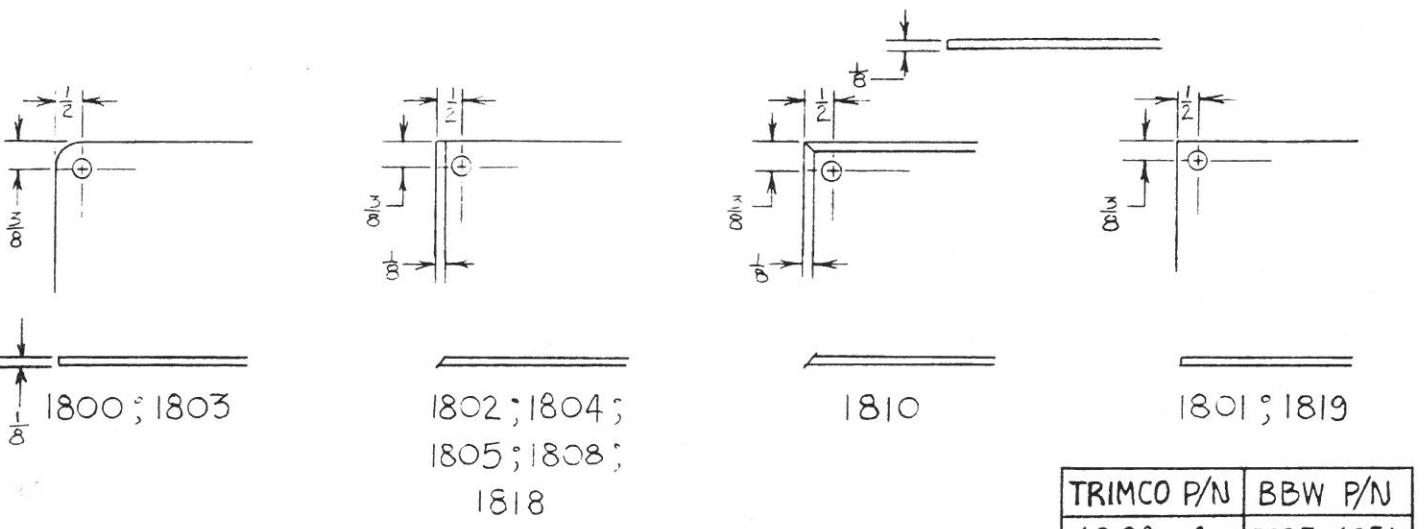
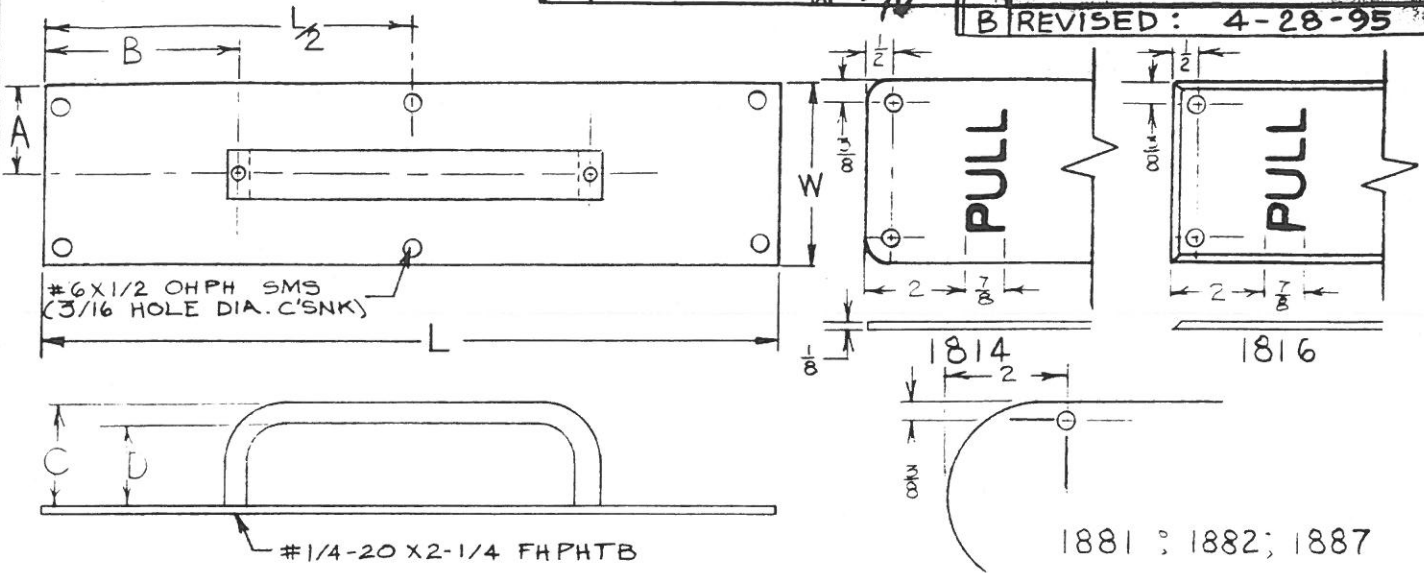


C REVISED: 9-21-95

A REVISED: 12-31-86

B REVISED: 4-28-95



NOTE: DO NOT PREDRILL DOOR.

TRIMCO P/N	BBW P/N
1802-4	5035x605 E
1804-4	5036-E

001102

TRIMCO PART NO.	1808	1800; 1804; 1810; 1814; 1816	1801; 1802; 1805; 1881; 1882	1803	1818	1819; 1887	B									
GRIP	1109-1	1117-1	1139-1	1117-2	1193-1	1130-2										
CTC	5 1/2 CTC	5 CTC	6 CTC	8 3/4 CTC	5 1/2 CTC	6 1/2 CTC	8 CTC									
PLATE SIZE	A	B	A	B	A	B	A	B	A	B	A	B	A	B		
-1	3	12	1 1/2	3 1/4	1 1/2	3 1/2	1 1/2	3	1 1/2	1 5/8	1 1/2	3 1/4	1 1/2	2 3/4	1 1/2	2
-2	3 1/2	14	1 3/4	4 1/4	1 3/4	4 1/2	1 3/4	4	1 3/4	2 5/8	1 3/4	4 1/4	1 3/4	3 3/4	1 3/4	3
-3	3 1/2	15	1 3/4	4 3/4	1 3/4	5	1 3/4	4 1/2	1 3/4	3 1/8	1 3/4	4 3/4	1 3/4	4 1/4	1 3/4	3 1/2
-4	4	16	2	5 1/4	2	5 1/2	2	5	2	3 5/8	2	5 1/4	2	4 3/4	2	4

PAGE 1 OF 2

DWG. NO. 11514

Trimco / **BBW**
 Triangle Brass Manufacturing Company, Inc.
 3528 Emery Street, P.O. Box 23277
 Los Angeles, CA 90023, USA

1800 TO 1805, 1808, 1810,
 1814, 1816, 1818, 1819,
 1881, 1882, 1887
EXTRUDED PULL PLATE
 DR. BY: L.R.

Book No. _____ Date Requested: _____
 This template is provided for use only on
 the job for which it was requested.
 Trimco reserves the right to make design
 changes without notice.

A REVISED: 12-31-86
 B REVISED: 4-28-95
 C REVISED: 9-21-95 TA. *RB*

PART No.	PUSH PL.	GRIP	CTC	C	D
1800	1806	1117-1	5	2	1 1/2
1800B	1806	1117-2	8 3/4	2 1/4	1 5/8
1801	1975	1139-1	6	2 1/8	1 1/2
1801B	1975	1139-2	8	2 1/8	1 1/2
1802	1807	1139-1	6	2 1/8	1 1/2
1802B	1807	1139-2	8	2 1/8	1 1/2
1803	1806	1117-1	5	2 1/4	1 5/8
1803B	1806	1117-2	8 3/4	2 1/4	1 5/8
1804	1807	1117-1	5	2	1 1/2
1804B	1807	1117-2	8 3/4	2 1/4	1 5/8
1805	1807	1139-1	6	2 1/8	1 1/2
1805B	1807	1139-2	8	2 1/8	1 1/2
1808	1807	1109-1	5 1/2	2	1 1/2
1808B	1807	1109-2	7 1/2	2	1 5/8
1810	1809	1117-1	5	2	1 1/2
1810B	1809	1117-2	8 3/4	2 1/4	1 5/8
1814	1813	1117-1	5	2	1 1/2
1814B	1813	1117-2	8 3/4	2 1/4	1 5/8
1816	1815	1117-1	5	2	1 1/2
1816B	1815	1117-2	8 3/4	2 1/4	1 5/8
1818	1807	1193-1	5 1/2	2	1 1/2
1818B	1807	1193-2	8	2	1 1/2
1819	1975	1130-1	6 1/2	2	1 5/8
1819B	1975	1130-2	10	2 1/8	1 5/8
1881	1884	1139-1	6	2 1/8	1 1/2
1881B	1884	1139-2	8	2 1/8	1 1/2
1882	1884	1139-1	6	2 1/8	1 1/2
1882B	1884	1139-2	8	2 1/8	1 1/2
1887	1884	1130-1	6 1/2	2	1 5/8
1887B	1884	1130-2	10	2 1/8	1 5/8

001102 PAGE 2 OF 2 DWG. NO 11514

Trimco / BBW
 Triangle Brass Manufacturing Company, Inc.
 3528 Emery Street, P.O. Box 23277
 Los Angeles, CA 90023, USA

1800 TO 1805, 1808, 1810,
 1814, 1816, 1818, 1819,
 1881, 1882, 1887
EXTRUDED PULL PLATES
 DR. BY: L. R.

Book No. _____ Date Requested: _____
 This template is provided for use only on
 the job for which it was requested.
 Trimco reserves the right to make design
 changes without notice.