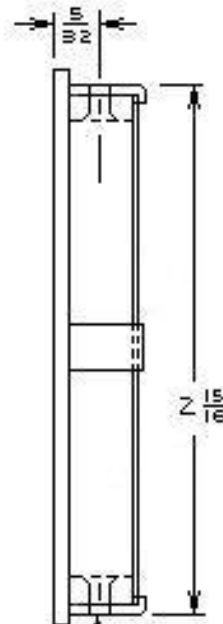
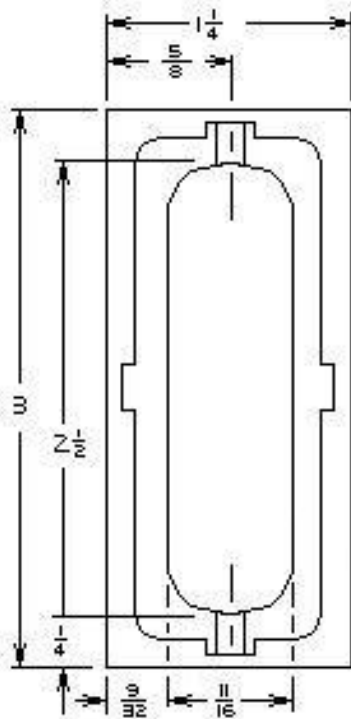
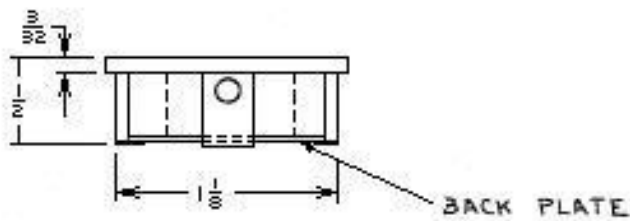


A	REVISED: 1-20-87
B	REVISED: 3-21-88
C	REVISED: 7-10-91
D	REVISED: 11-14-94
E	REVISED: 9-18-95



DRILL AND C SUNK FOR
#6 X 3/4 SMS OR
#6/32 X 1/2 MS



DWG. NO. 11532

Trimco / BBW
Triangle Brass Manufacturing Company, Inc.
3528 Emery Street, P.O. Box 23277
Los Angeles, CA 90023, USA

1113
FLUSH PULL
DR. BY: L. R.

Book No. _____ Date Requested: _____
This template is provided for use only on
the job for which it was requested.
Trimco reserves the right to make design
changes without notice.