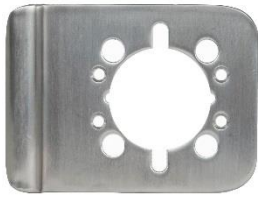


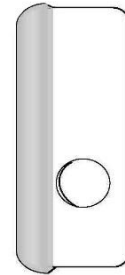
1082 Series Cylindrical Lock Guards



1082-4



1082-6



1082-8

ABOUT THE 1082 SERIES CYLINDRICAL LOCK GUARDS

Trimco's 1082 Series Lock Guards protect all 2-3/4" backset cylindrical locks from vandalism and forced entry. The Lock Guard can also be custom fit to many alarm or security locksets. The 1082 Series are made of 1/8" thick stainless steel, are non-handed for cylindrical locks, and require no extra drilling for through bolts. They are perfect for retrofit or new construction. Higher security available with 1082-6 SP utilizing two additional 1/4-20 studs near door edge. Simple door prep for installation.

FEATURES

- Easy installation.
- Universal to all bored commercial 2-3/4" backset locksets.
- Two standard sizes: 4" and 6".
- 1082-2 is handed. Please reference Right (RH) or Left (LH) handing.
- Type 316 stainless steel is the most corrosive-resistant grade available.
- Custom versions available for electronic locks.
- Also available with studs welded to the back.

APPLICATIONS

- Offices
- Hospitality
- Multifamily & Mixed Use
- Commercial & Industrial Buildings
- Government & Military Facilities

TRIMCO#	1082-4	1082-6	1082-8
OA	4"X5-3/8"	4"X6X5-3/8"	2-7/8"X8
HANDING	Non-Handed	Non-Handed	Handed (RH or LH)