

FOR WOOD AND METAL DOORS

INTERIOR SIDE

TOP OF DOOR SHOWING PREP

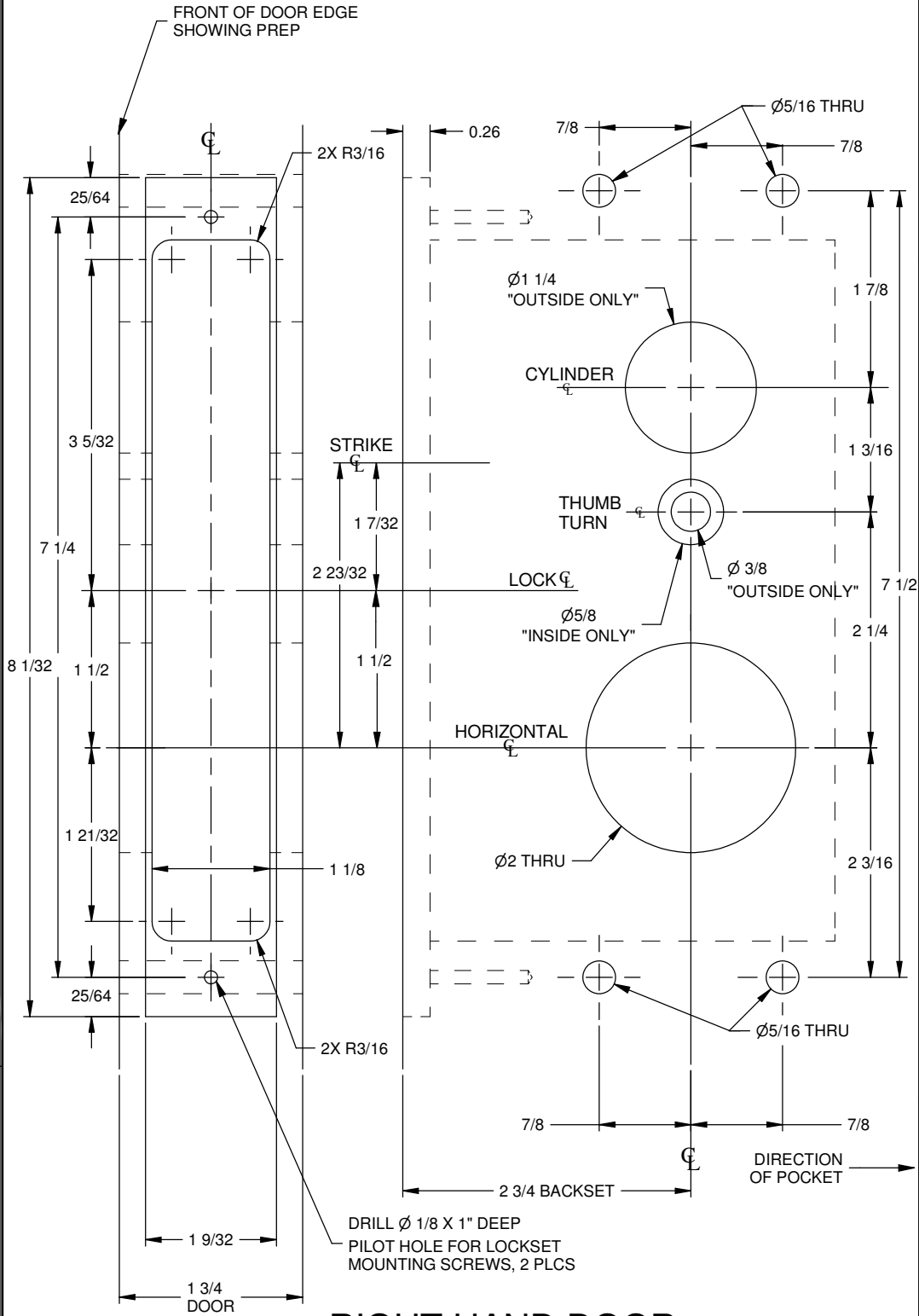
1 1/8

4 1/8 DEEP

NOTE: This template is provided for use only on the job for which it was requested. Trimco reserves the right to make design changes without notice. Trimco will not be responsible for errors or damage caused by the use of out-of-date templates.

TEMPLATE NO.
19489
SHT 1 OF 5

Trimco
3528 Emery Street
PO BOX 23277
Los Angeles, CA 90023-0277
(323) 262-4191 www.trimcobhw.com
email: info@trimcobhw.com



RIGHT HAND DOOR

DOOR TO BE USED WITH TRIMCO
POCKET BARN DOOR LOCK AND
ESCAPE CHIMB AND ESCUTCHEON
MOUNTS TO LOCK SET.
SEE TRIMCO WEBSITE FOR
MOUNTING INSTRUCTIONS.
TRIMCO IS NOT RESPONSIBLE FOR
ANY DAMAGE TO THE DOOR OR
FRAME CAUSED BY THE USE OF
THIS TEMPLATE.

PRODUCT
1074-2E-XXX-5004
POCKET BARN DOOR LOCK AND
ESCAPES CHIMB AND ESCUTCHEON
MOUNTS TO LOCK SET

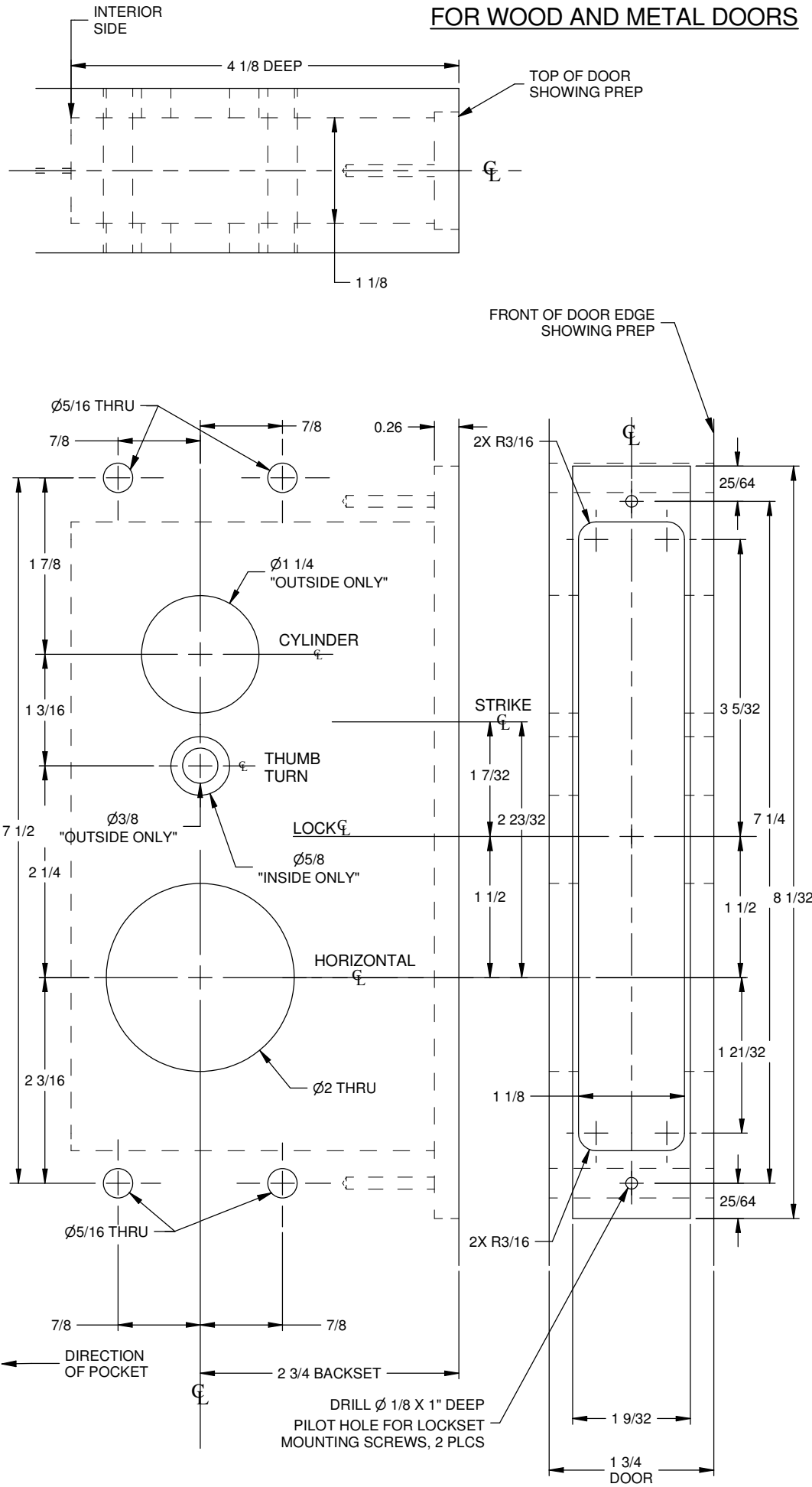
DATE
03/04/15



3528 Emery Street
PO BOX 23277
Los Angeles, CA 90023-0277
www.trimcobhw.com
email:info@trimcobhw.com

PRODUCT
1074-2E-XXX-504
POCKET/BARN DOOR / LOCK MOUNTING AND ESCUTCHEON
MORTISE LOCK PREP

FOR WOOD AND METAL DOORS



NOTE: This template is provided for use only on the job for which it was requested. Trimco reserves the right to make design changes without notice. Trimco will not be responsible for errors or damage caused by the use of out-of-date templates.

DATE
03/04/15

LEFT HAND DOOR

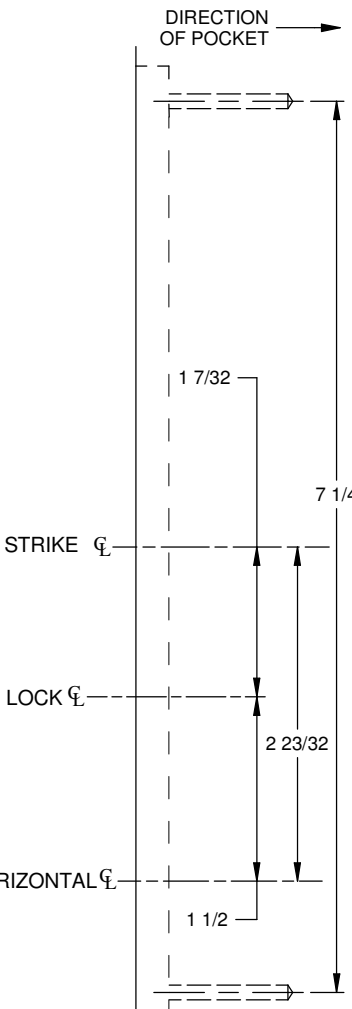
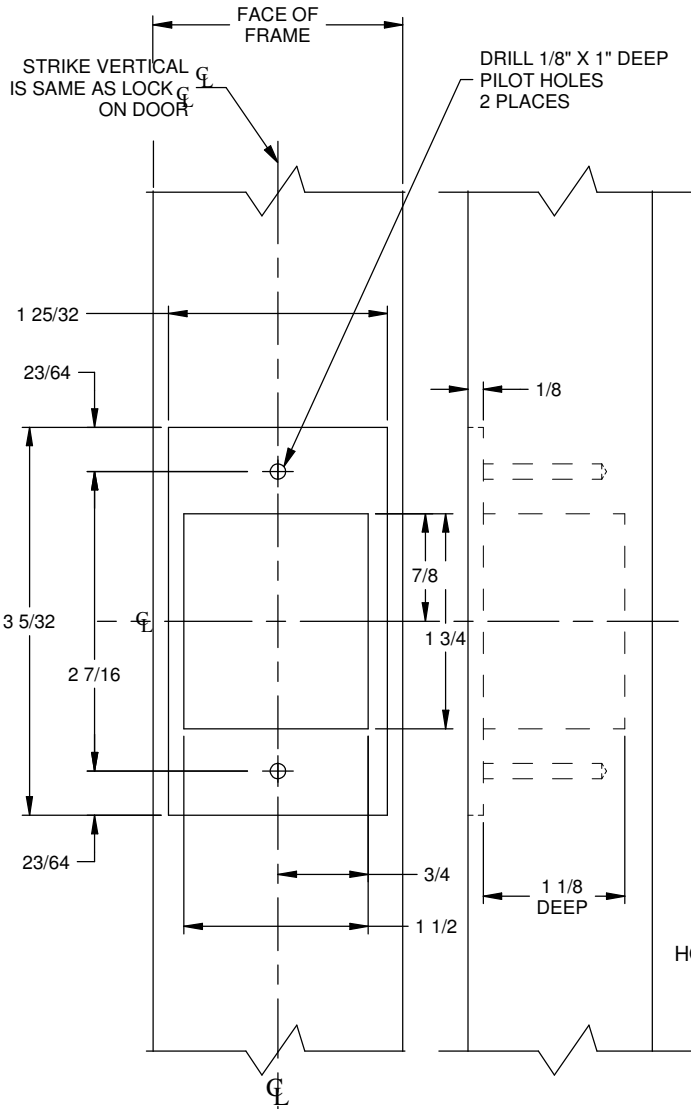


Trimco
3528 Emery Street
PO BOX 23277
Los Angeles, CA 90023-0277
(323) 262-4191 www.trimcobhw.com
email:info@trimcobhw.com

PRODUCT
1074-2E-XXX-504
POCKET/BARN DOOR LOCK AND ESCUTCHEON
MORTISE LOCK PREP

WOOD FRAME PREP

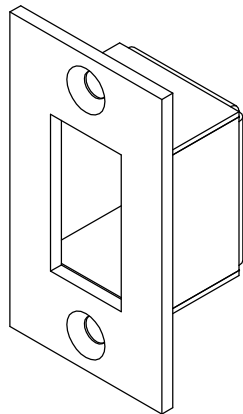
WOOD DOOR PREP



FRAME:
FACING FRONT FRAME:
FACING SIDE
THIS FRAME PREP IS FOR
SURFACE-MOUNTED STRIKES

EXTERIOR FACE
OF RIGHT HAND DOOR
FOR REFERENCE

DOOR:
FACING SIDE



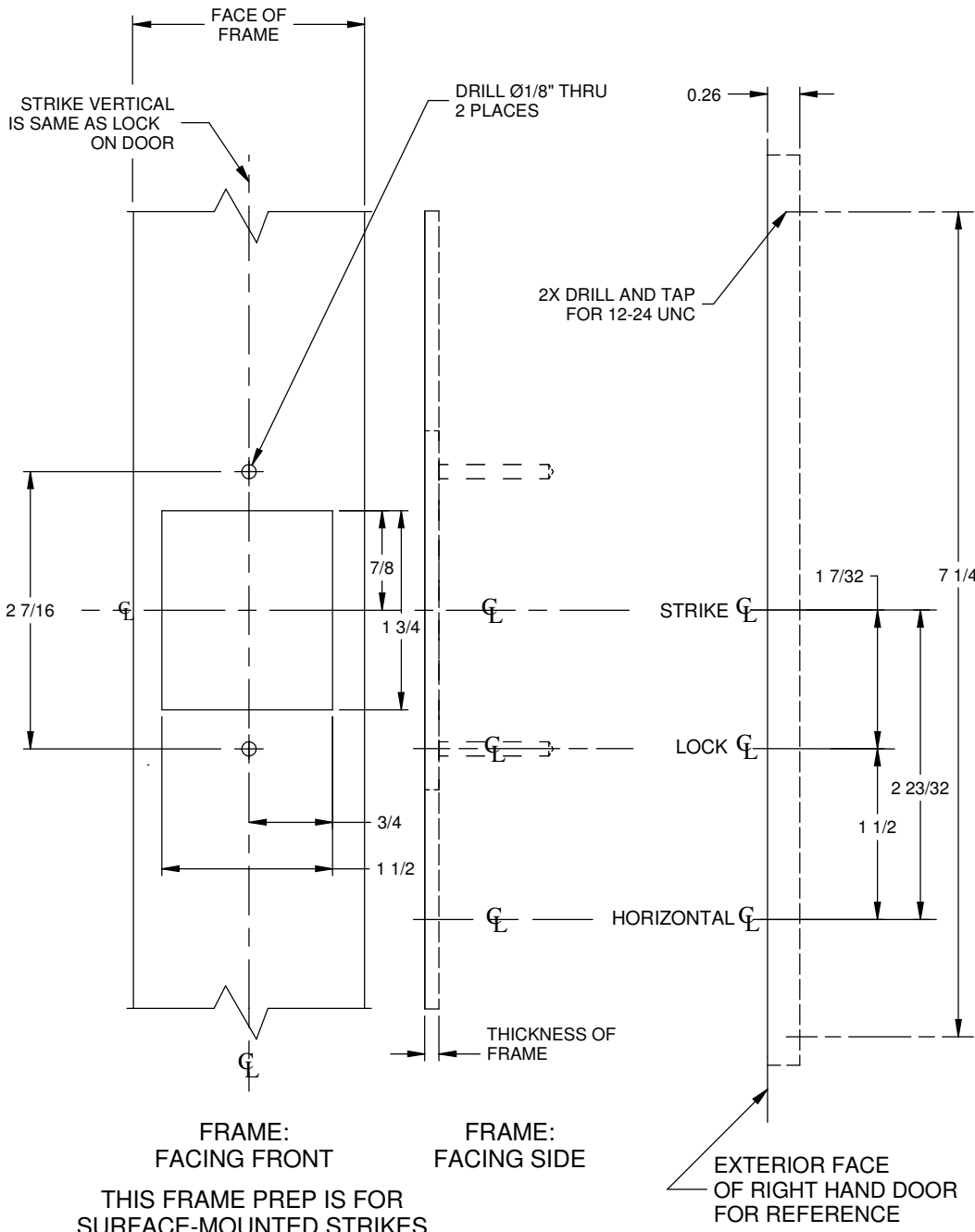
1072-2 STRIKE/DUST COVER ASSEMBLY

NOTE: This template is provided for use only on the job for which it was requested. Trimco reserves the right to make design changes without notice. Trimco will not be responsible for errors or damage caused by the use of out-of-date templates.

DATE
03/04/15

METAL FRAME PREP

DOOR PREP

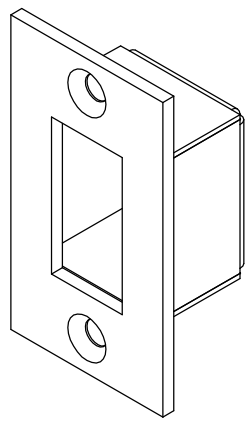


FRAME:
FACING FRONT
THIS FRAME PREP IS FOR
SURFACE-MOUNTED STRIKES

FRAME:
FACING SIDE

EXTERIOR FACE
OF RIGHT HAND DOOR
FOR REFERENCE

DOOR:
FACING SIDE



1072-2 STRIKE/DUST COVER ASSEMBLY

- NOTE 1:
IF THE STRIKE IS SURFACE MOUNTED, THERE WILL BE A GAP BETWEEN THE FRAME AND THE DOOR.
- NOTE 2:
IF THE STRIKE IS TO BE FLUSH MOUNTED, REFER TO SHEET 3 FOR FRAME PREP SPECIFICATIONS.

NOTE: This template is provided for use only on the job for which it was requested. Trimco reserves the right to make design changes without notice. Trimco will not be responsible for errors or damage caused by the use of out-of-date templates.

DATE
03/04/15



3528 Emery Street
PO BOX 23277
Los Angeles, CA 90023-0277
(323)262-4191 www.trimcobhw.com
email:info@trimcobhw.com

1074-2E-XXX-5004
POCKET/BARN DOOR
WITH LOCK INDICATOR
AND ESCUTCHEON
MORTISE LOCK HEAD

INSTALLATIONS STEPS
1074-2E-XXX-5004
POCKET DOOR PRIVACY SET WITH LOCK INDICATOR AND ESCUTCHEON
WITH LEVERS IN THE DOWN POSITION

1. After the door and frame have been prepped, take the mortise lock, remove the front cover plate, and temporarily set the plate and the two mounting screws aside.
2. Insert the mortise lock into the prep on the door's edge. Using a screwdriver, screw in both of the #12 x 1" flat head combination screws into each pinhole located at the top and bottom.
3. Install the strike into the frame using the two #12 x 1" flat head combination screws supplied for this purpose.
4. Take the escutcheon plate Assembly on the cylinder side, and insert into the exterior door prep. You have to make sure that the spindle is inserted into the spindle hub, while you are doing this. Push the escutcheon plate Assembly up against the door's surface. The lever should be at the down position. Make sure the spindle orientation is on diamond, and that the indicator is in the OPEN position (Green color). Note: The 5004 lock indicator is already installed into the escutcheon plate assembly.
5. Next, insert the thumb-turn escutcheon plate Assembly into the door prep on the interior side. You will need to insert the lever spindle and the thumb-turn spindle into the two hubs. The lever should be at the DOWN position, and the thumb-turn should be at the UP position.
6. On the interior side of the door, screw in the mounting screws at each corner of the escutcheon plate; snug them, but do not over-tighten.
7. Test the lever set by throwing the thumb-turn towards the strike. This should extend the latch forward and therein lock the door on the outside. Grab the exterior lever to make sure that it is rigid (locked).
8. Now test the interior lever. First, close the door all the way to the strike, then; turn the thumb-turn towards the strike. This will extend the latch bolt into the strike and lock the door to the outside. Next pull on the interior lever to open the door; you should be able to see the thumb-turn move back while you are operating the lever and consequently opening the door.
9. Hold the cylinder and check to see if the "wavy washer" spring is behind the cylinder face. Taking the cylinder collar, insert the cylinder into the collar, making sure that the "wavy washer" spring is between the collar and behind the cylinder head.
10. Thread the cylinder and the cylinder collar into the exterior side of the mortise lock- keep threading until the cylinder collar is no longer moving. Make sure that the keyway is at the 6 o'clock position.
11. Take a screwdriver and insert it into the hole that is just above the latch bolt. There is a setscrew in this hole that needs to be tightened (do not over tighten).
12. Now test the cylinder- insert the key and verify that turning the key moves the latch bolt back and forth smoothly. Turning the key should also rotate the thumb-turn.
13. To conclude the installation, open the door (if it is not already open), and retract the latch bolt either by rotating the key, or the thumb-turn. Locate the mortise lock faceplate and the two mounting screws that were set aside at the start of this installation and re-install the faceplate using these two screws.
14. Conduct a final check to verify satisfactory performance using the key, the levers, and the thumb-turn.
15. Peel away the back of the "SLIDE" decal and adhere to the door as is shown in Template 19618 Installation Instructions.
16. The installation is complete.

NOTE: This template is provided for use only on the job for which it was requested.
Trimco reserves the right to make design changes without notice. Trimco will
not be responsible for errors or damage caused by the use of out-of-date templates.

DATE

03/04/15