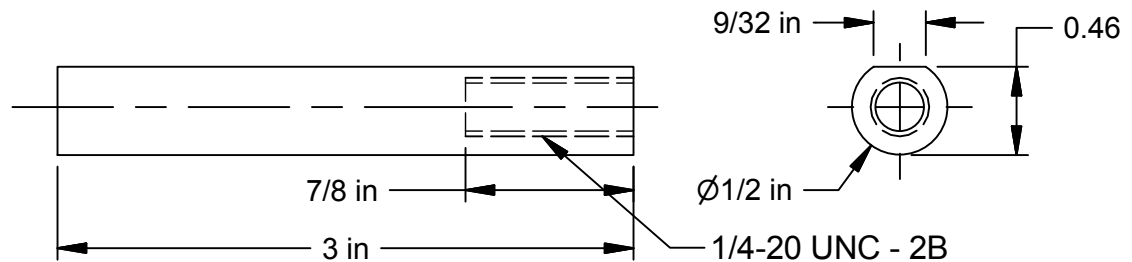
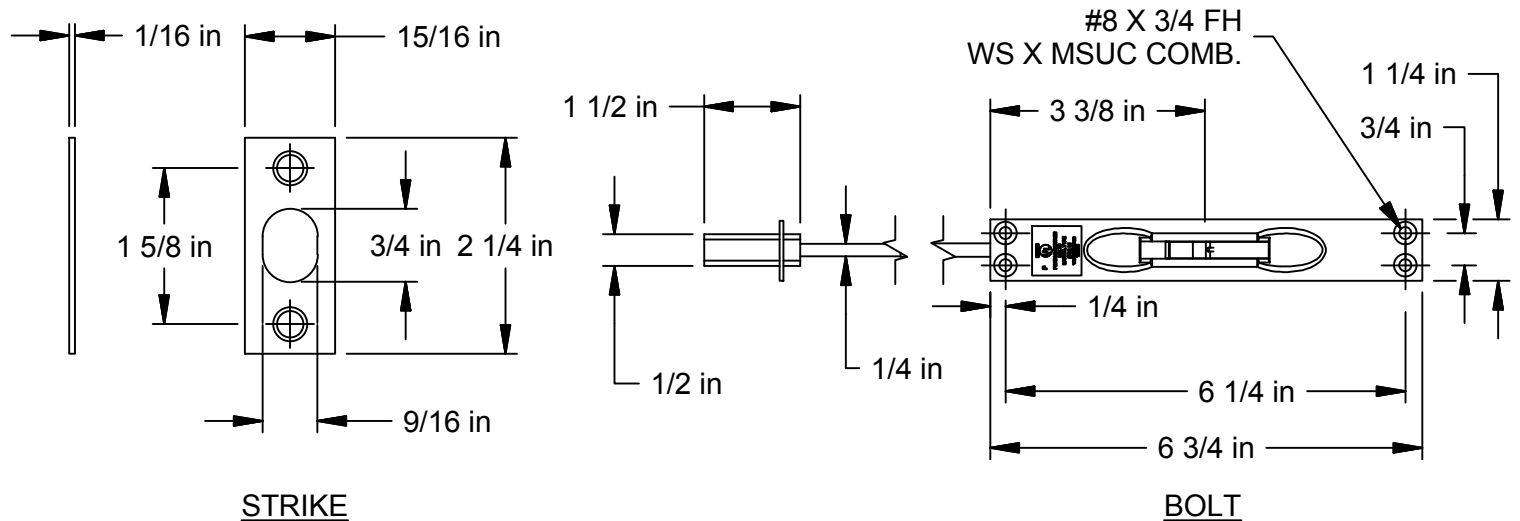
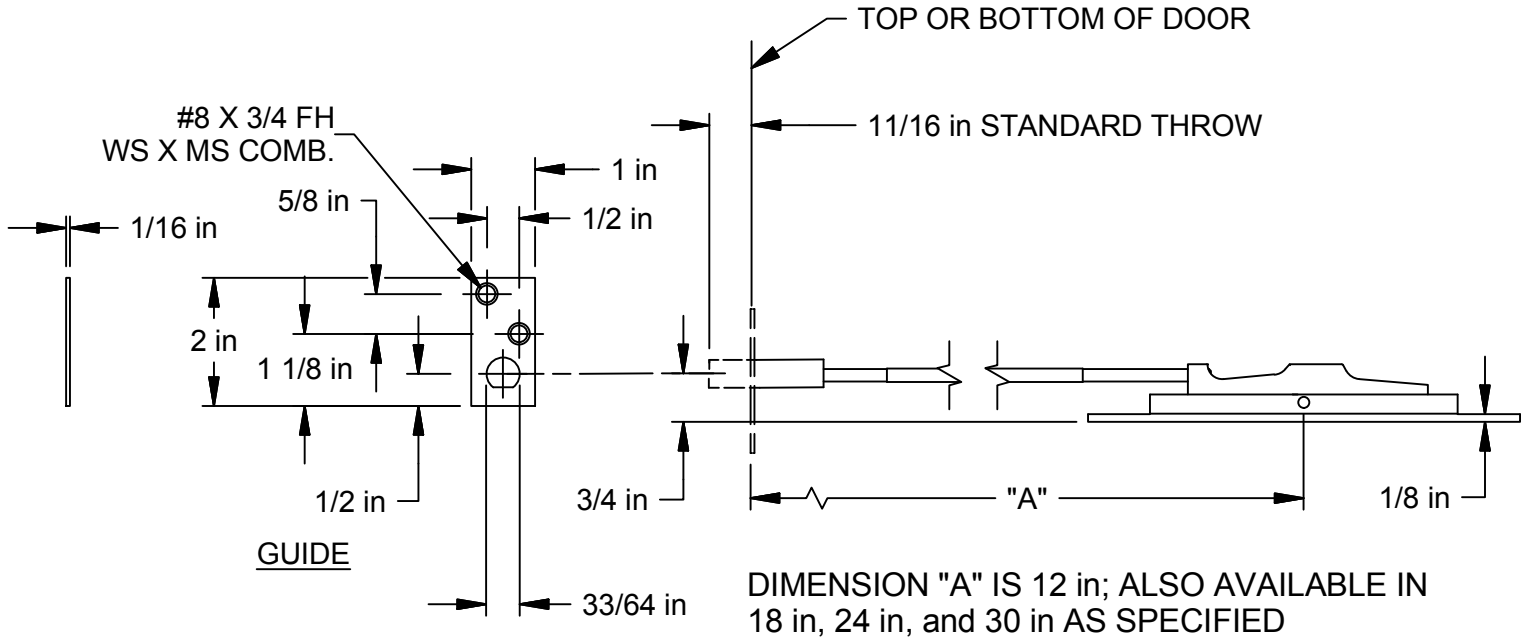


NOTES:

1. THIS CONFORMS TO AMERICAN STANDARD (A.S.A.) SPECIFICATION A1154-1359.
2. SUPPLIED WITH 1-1/2 IN LONG BOLTHEAD AS STANDARD.
3. APPLICATION: FOR HOLLOW METAL DOORS.



PATENT # 4315647

OPTIONAL 3917-3B BOLTHEAD

REVISION:
CREATED 2-12-13 (SPLIT OFF FROM 19156) SH
CORRECTED OBSOLETE CONFIGURATION IN UPPER RIGHT VIEW, SGHJG 07/03/13
CORRECTED TITLE: MANUAL FLUSH BOLT WAS: AUTO FLUSHBOLT, CHANGED GUIDE DIM 3/4 IN WAS: 7/8 IN, SGHJG, 01/07/14
ADDED OPTIONAL 3917-3B BOLTHEAD AND DIMENSIONS, SGHJG, 03/11/14
DELETED FOR 3915 FROM UL NOTE, SGHJG, 03/12/14

NOTE: This template is provided for use only on the job for which is was requested. Trimco reserves the right to make design changes without notice. Trimco will not be responsible for errors or damage caused by the use of out-of-date templates.

DATE

03/18/14