

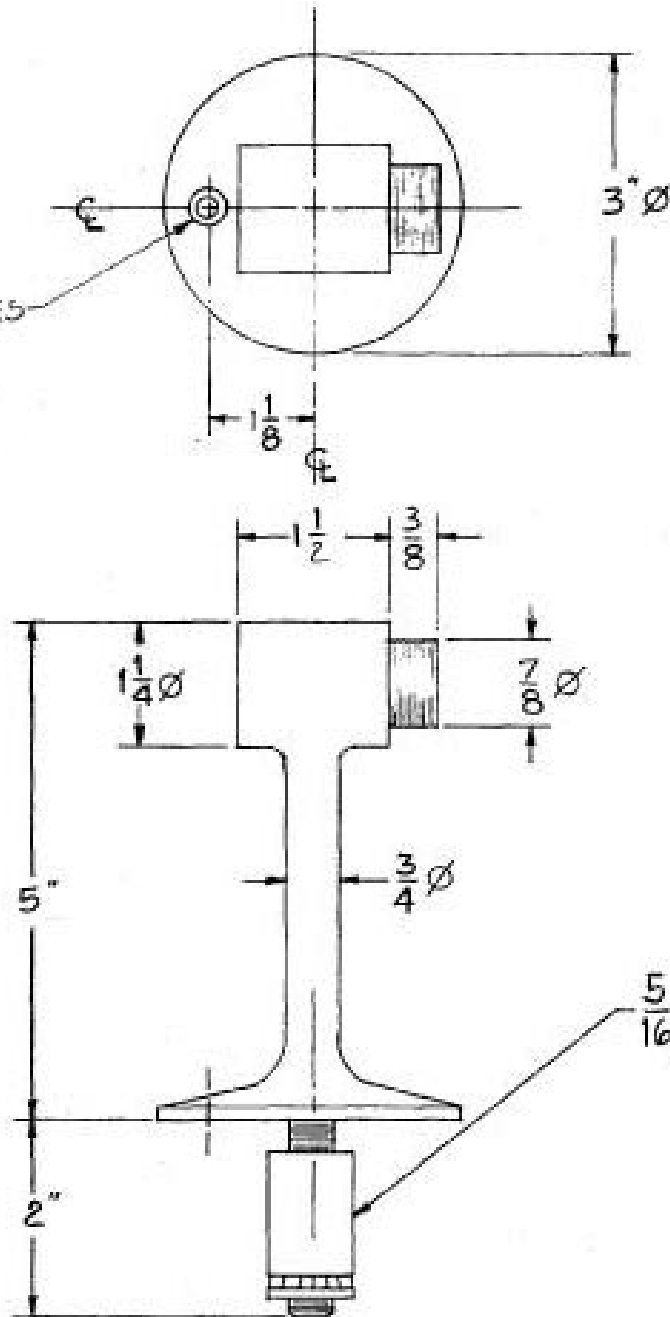
NOTES:

1. COMBINATION PACKAGED FOR CONCRETE OR WOOD APPLICATION

REVISIONS

LTR	DESCRIPTION	DATE	CHECKED
—	NEW DWG.	5-1-95	<i>[Signature]</i>

* 8-32 x 1" OH. PH. MS x ES
 * 8 x 1/4 OH, PH, SMS



5/16 - 18 x 2" HANGER BOLT
 x EXPANSION SHIELD

Book No. _____ Date Requested: _____
 This template is provided for use only on the job for which it was requested.
 Trimco/BBW reserves the right to make design changes without notice.

Trimco / BBW
 Triangle Brass Manufacturing Company, Inc.
 3528 Emery Street, P.O. Box 23277
 Los Angeles, CA 90023, USA

SCALE

TITLE

1201-5
 FLOOR STOP

PART NO

DRAWN BY T.A. 5-1-95

A DWG. NO. 11439