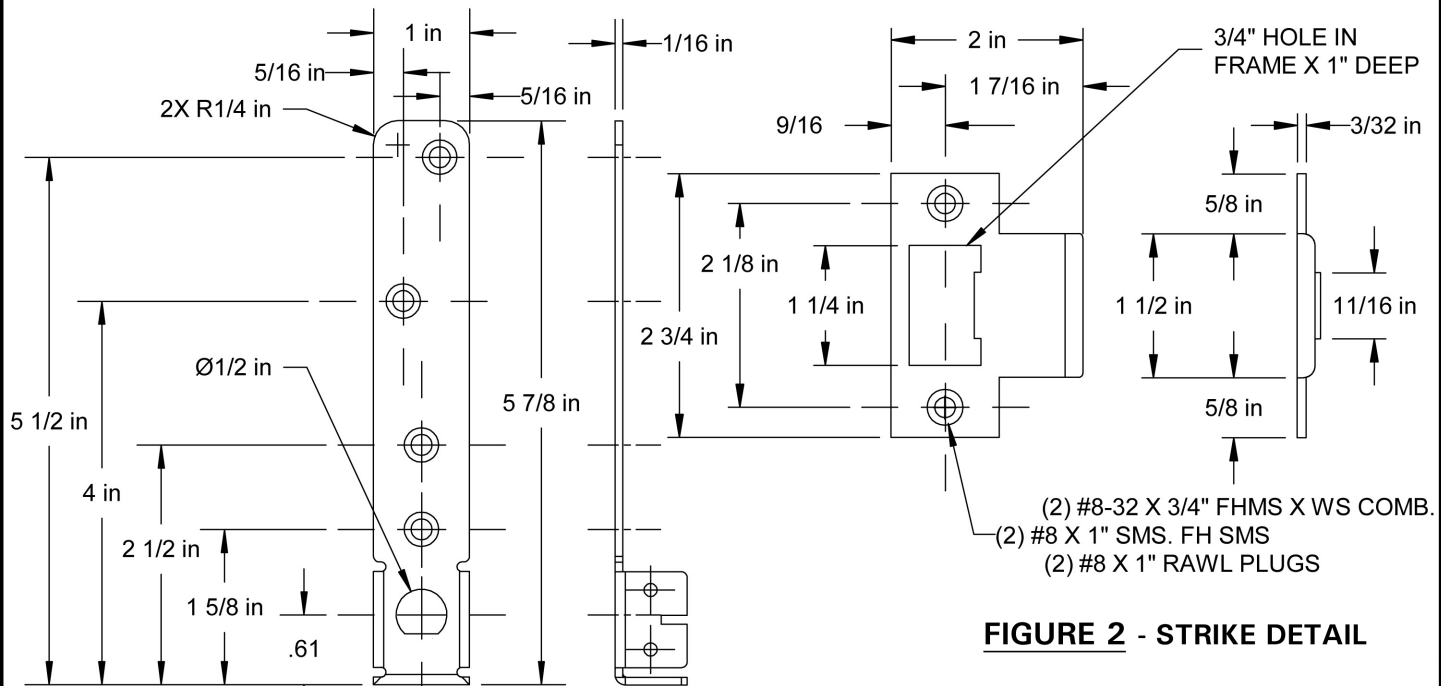
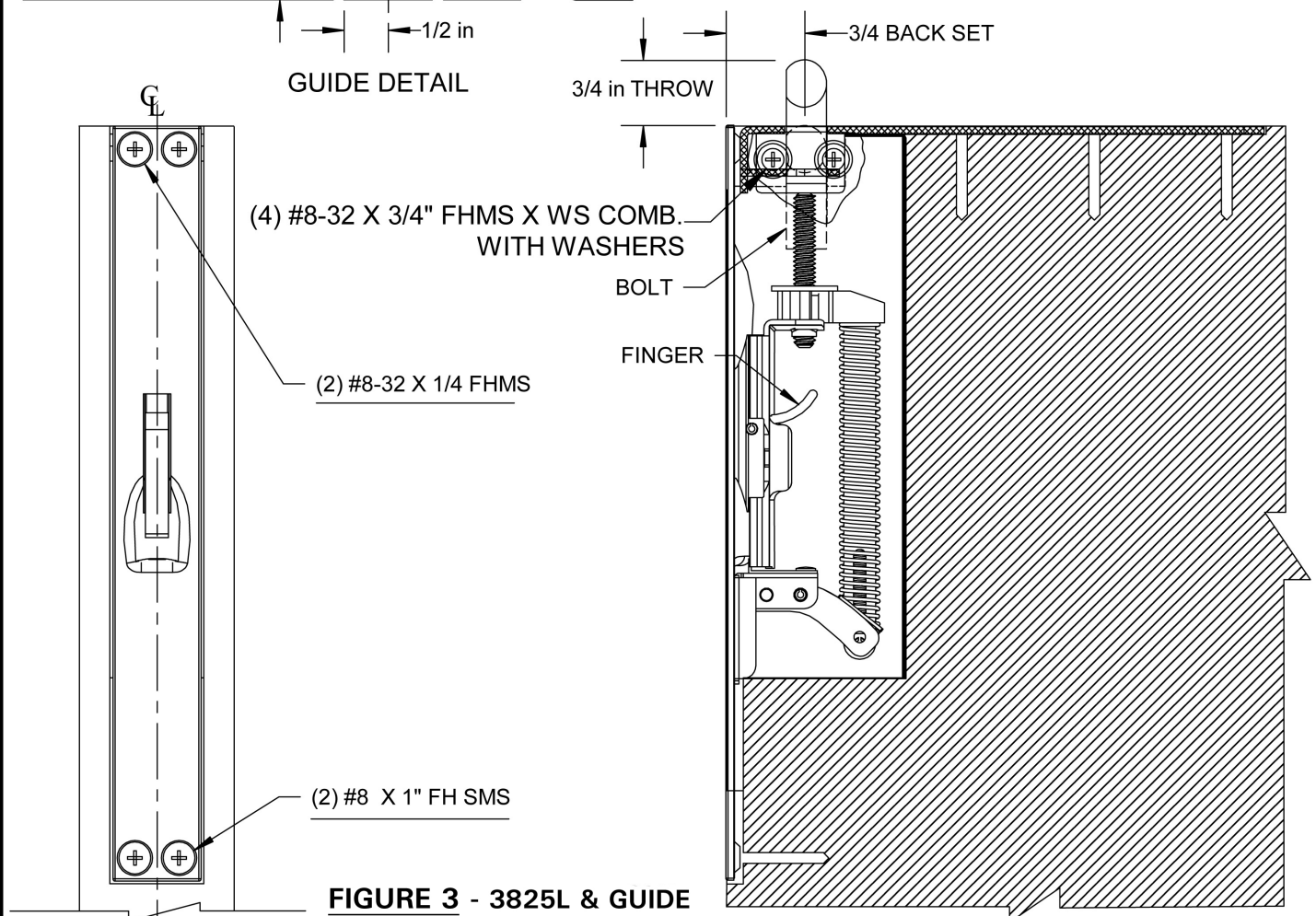


**FIGURE 1 - INACTIVE DOOR**



**FIGURE 2 - STRIKE DETAIL**



**FIGURE 3 - 3825L & GUIDE**



## INSTALLATION INSTRUCTIONS

1. PREPARE INACTIVE DOOR AS SHOWN IN FIGURE 1. SEAL DOOR IMMEDIATELY.
2. PREPARE FRAME FOR ANSI A115.4 STRIKE AS IN FIGURE 2. LOCATE STRIKE TO LINE UP WITH BOLT.
3. INSTALL TRIMCO 3910 OR 3911 DUST PROOF STRIKE IN FLOOR (TEMPLATE AVAILABLE), OR ANSI A115.4 STRIKE SHOWN IN FIGURE 2. LOCATE STRIKE TO LINE UP WITH BOLT. INSTALL STRIKE.
4. INSTALL TRIMCO 3825L AS SHOWN IN FIGURE 3.
5. HANG DOOR.
6. ADJUST BOLT SO WHEN FULLY RETRACTED, PROVIDES 1/8" CLEARANCE BETWEEN BOLT AND STRIKE. TO ADJUST BOLT, REMOVE SCREWS UNDERLINED IN FIGURE 3 AND REMOVE GUIDE. ROTATE BOLT UP OR DOWN AS REQUIRED, THEN REPLACE GUIDE.

**Revision Records**

Title: Semi-Auto Flushbolt was Auto Flushbolt; Titles added to figure labels; Figure 4 and Installation instruction 7 Deleted; Instruction 4 3825L was 3825; Instruction 6, guide was bolt, 2 places, mff/sjg, 4/20/16  
Sheet 2, Dim 0.81 was 3/4 in, Dim 3/4 in Backset was 7/8 in Backset, shjg, 3/13/15  
Original Dated 2/7/05

**NOTE:** This template is provided for use only on the job for which it was requested. Trimco reserves the right to make design changes without notice. Trimco will not be responsible for errors or damage caused by the use of out-of-date templates.

**DATE**

4/20/16