

# HEALTHY HARDWARE<sup>®</sup> & HANDS-FREE SOLUTIONS

BY TRIMCO<sup>®</sup>

HELPING CREATE  
HEALTHIER BUILDINGS  
ONE DOOR AT A TIME.





# Trimco®

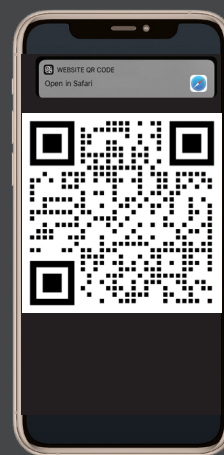
SINCE 1949

- 04 STOREFRONTS + VESTIBULE DOORS
- 06 HOSPITAL PATIENT + ICU ROOMS
- 08 MULTI-USE RESTROOMS
- 10 PRIVATE RESTROOMS
- 12 OFFICE + CONFERENCE ROOMS
- 14 RETAIL + RECEPTIONS
- 16 SCHOOLS + RECREATION
- 18 ASSISTED LIVING + HOSPITALITY
- 20 EXITS + BACK DOORS
- 22 PRODUCT INDEX

THIS CATALOG INCLUDES CODES FOR  
EASY REFERENCE ON MOBILE DEVICES

## HOW TO SCAN QR CODES

1. Open your smartphone or camera.
2. Point your camera at the QR Code until the viewfinder recognizes the code and a link appears on your screen.
3. Click the link that appears on your screen and you will be directed to the webpage.



Scan in the QR Code  
shown here for an  
electronic version  
of this catalog.



# MISSION + WHY HEALTHY HARDWARE?

## OUR MISSION

We make a difference by innovating, designing, and manufacturing products that help make our world safer, healthier, more accessible, and fashionable.

## HEALTHY HARDWARE® FACTS

- Healthy Hardware®, made from Copper Alloy
- Similar in appearance to satin stainless steel
- Manufactured in North America
- Available in a wide range of hardware and touch surfaces
- Most commonly used in Healthcare, Education, Offices, Hospitality, Commercial, and other high traffic public spaces



# STOREFRONTS + VESTIBULES

HELPS KEEP YOUR FACILITY  
HEALTHY.



**AP400 SERIES**  
ARCHITECTURAL  
LADDER PULLS



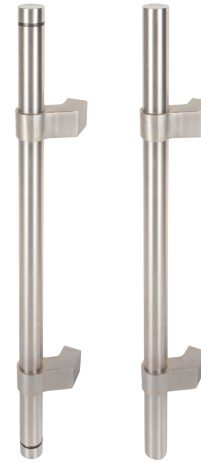




**AP100 SERIES**  
ARCHITECTURAL  
STRAIGHT PULLS



**AP200 SERIES**  
ARCHITECTURAL  
OFFSET PULLS



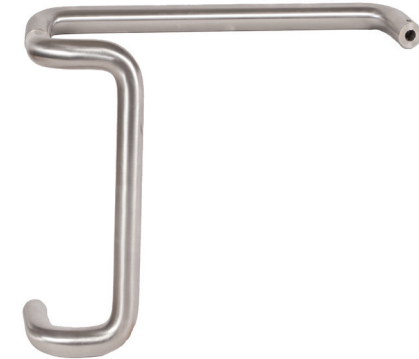
**AP300 SERIES**  
ADJUSTABLE, AND  
CONFIGURABLE PULLS



**AP330 SERIES**  
HANDS-FREE BENT  
ADJUSTABLE PULLS



**AP400 SERIES**  
ARCHITECTURAL  
LADDER PULLS



**1700 SERIES**  
PUSH/PULL BAR SETS



**1191/1194 SERIES**  
STANDARD OFFSET  
AND STRAIGHT GRIPS



**PBT8000 SERIES**  
EXIT DEVICE  
PUSH BAR COVERS



# HOSPITAL PATIENT + ICU ROOMS

KEEP A **HEALTHY  
ENVIRONMENT** FOR  
YOUR PATIENTS.

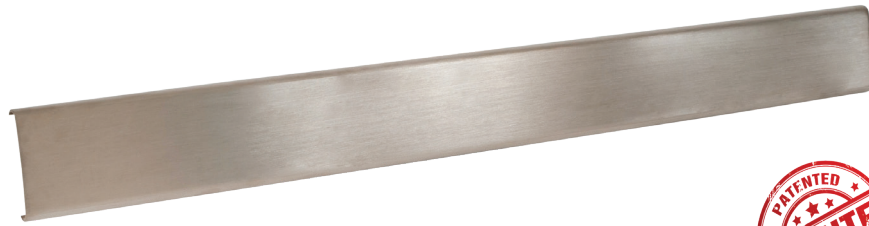


▶ **1562 SERIES**  
PUSH/PULL LATCHES



**9 SERIES**  
MORTISE LOCKS





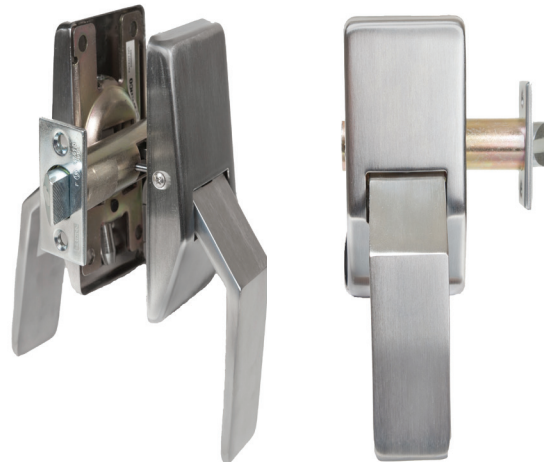
**PBT8000 SERIES**  
EXIT DEVICE  
PUSH BAR COVERS



SEE MORE OPTIONS



**9 SERIES**  
MORTISE LOCKS



**1562 SERIES**  
PUSH/PULL LATCHES



**K SERIES**  
PROTECTION PLATES



**APC10 SERIES**  
CABINET PULLS



**562 SERIES**  
CABINET PULLS



[linkedin.com/company/trimco/](https://www.linkedin.com/company/trimco/)



[@trimcohardware](https://www.instagram.com/trimcohardware)



# MULTI-USE RESTROOMS



**HANDS-FREE** MAY HELP REDUCE BACTERIA ON HIGH-RISK OPENINGS SUCH AS MULTI-USE AND PUBLIC RESTROOMS.

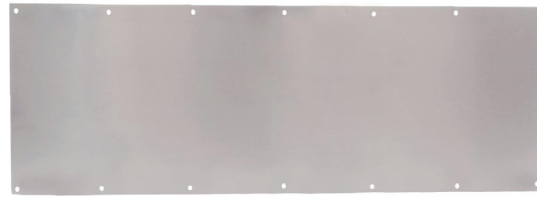


▶ **1035 SERIES**  
ULTIMATE  
RESTROOM PULLS

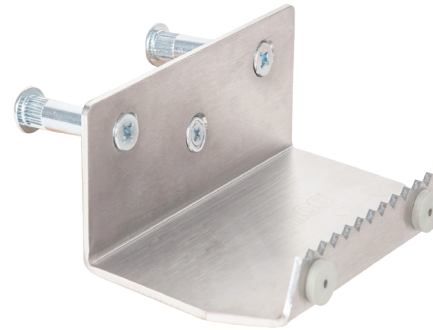


▶ **UFP SERIES**  
ULTIMATE FOOT PULLS





**K SERIES**  
PROTECTION PLATES



**UFP SERIES**  
HANDS-FREE  
ULTIMATE FOOT PULLS



**1135 SERIES**  
HANDS-FREE  
ULTIMATE GRIPS



**1035 SERIES**  
HANDS-FREE  
ULTIMATE RESTROOM PULLS



**1835 SERIES**  
HANDS-FREE  
ULTIMATE RESTROOM  
HEAVY-DUTY  
PUSH/PULL SET



**TIDAL SERIES**  
HANDS-FREE  
LOW TIDE  
ARM PULLS



**1198 SERIES**  
ADA GRAB BARS





# PRIVATE RESTROOMS

HANDS-FREE MAY HELP REDUCE THE TRANSMISSION OF BACTERIA ON PRIVATE BATHROOM TOUCH SURFACES.



**1198 SERIES**  
ADA GRAB BARS



▶ **TIDAL SERIES**  
ADA TIDAL SLIDE LOCKS





**APC10 SERIES**  
CABINET PULLS



**J SERIES**  
MORTISE LOCKS



**562 SERIES**  
CABINET PULLS



**K SERIES**  
PROTECTION PLATES

SEE MORE OPTIONS



**TIDAL SERIES**  
HANDS-FREE  
ADA SLIDE LOCK



**1198 SERIES**  
ADA GRAB BARS



# OFFICES + CONFERENCE ROOMS

HELPS KEEP A HEALTHY  
ENVIRONMENT FOR YOUR  
EMPLOYEES, VENDORS,  
AND CLIENTS.

▶ **AP400**  
ARCHITECTURAL  
LADDER PULLS





SEE MORE OPTIONS



**APC10 SERIES**  
CABINET PULLS



**9 SERIES**  
MORTISE LOCKS



**AP300 SERIES**  
ADJUSTABLE &  
CONFIGURABLE PULLS



**AP100 SERIES**  
ARCHITECTURAL  
STRAIGHT PULLS



**AP200 SERIES**  
ARCHITECTURAL  
OFFSET PULLS



**AP330 SERIES**  
HANDS-FREE  
ADJUSTABLE PULLS



**AP400 SERIES**  
ARCHITECTURAL  
LADDER PULLS



[linkedin.com/company/trimco/](https://www.linkedin.com/company/trimco/)



[@trimcohardware](https://www.instagram.com/trimcohardware)



# SCHOOLS + RECREATION



▶ **9 SERIES**  
MORTISE LOCKS





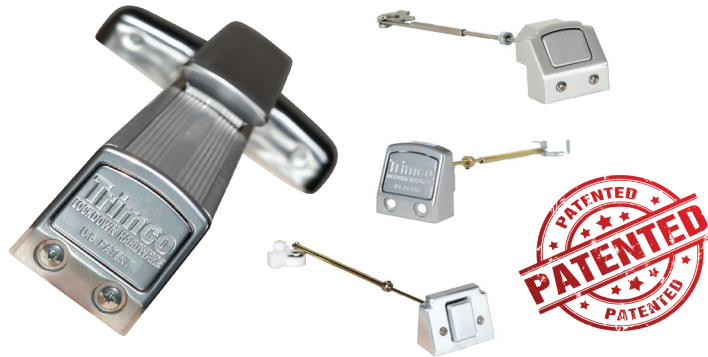
**PBT8000 SERIES**  
EXIT DEVICE  
PUSH BAR COVERS



SEE MORE OPTIONS



**9 SERIES**  
MORTISE LOCKS



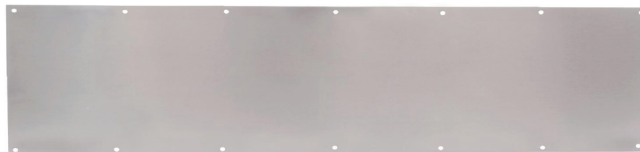
**LDH100 SERIES**  
LOCKDOWN HARDWARE®



**UCT SERIES**  
ULTIMATE COUNTERTOPS



**APC10 SERIES**  
CABINET PULLS



**K SERIES**  
PROTECTION PLATES



**562 SERIES**  
CABINET PULLS





# ASSISTED LIVING + HOSPITALITY

▶ **APC10 SERIES**  
CABINET PULLS

▶ **1069 SERIES**  
ADA POCKET  
DOOR PULLS

WELCOME GUESTS  
TO YOUR FACILITY  
WITH A HEALTHIER  
ENVIRONMENT.





**1069 SERIES**  
ADA POCKET DOOR PULLS



SEE MORE OPTIONS



**9 SERIES**  
MORTISE LOCKS



**UCT SERIES**  
ULTIMATE COUNTERTOPS



**K SERIES**  
PROTECTION PLATES



**410 SERIES**  
CABINET PULLS



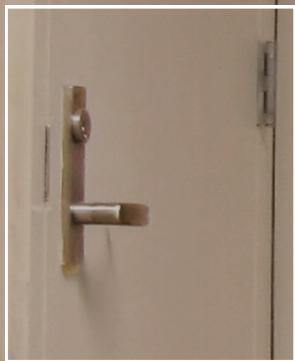
**562 SERIES**  
CABINET PULLS





# EXITS + BACKDOORS

EXIT DEVICES?  
WE'VE GOT YOU  
COVERED WITH THE  
PBT8000 SERIES.



▶ **9 SERIES**  
MORTISE  
LOCKS



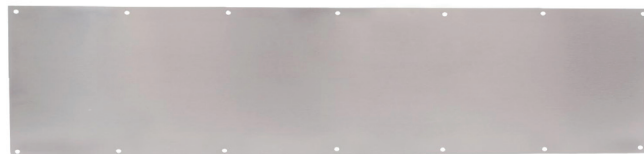
▶ **PBT8000 SERIES**  
EXIT DEVICE  
PUSH BAR COVERS



**PBT8000 SERIES**  
EXIT DEVICE  
PUSH BAR COVERS



**LDH100 SERIES**  
LOCKDOWN HARDWARE®



**K SERIES**  
PROTECTION PLATES

SEE MORE OPTIONS



**9 SERIES**  
MORTISE LOCKS



**1096 & 1097 SERIES**  
VANDAL-RESISTANT PULLS





# PRODUCT INDEX

## AP100 SERIES ARCHITECTURAL STRAIGHT PULLS



- Available with Healthy Hardware®  
Made from Copper Alloy.
- Wide array of material sizes and dimensions
- Manufactured from stainless steel, bronze, brass and aluminum
- Large range of center-to-center dimensions: 8" to 48"
- Material options include 3/4" round, 1" dia. and 1-1/4" dia.
- ADA Compliant



## AP200 SERIES ARCHITECTURAL OFFSET PULLS



- Available with Healthy Hardware®  
Made from Copper Alloy.
- Wide array of material sizes and dimensions
- Manufactured from stainless steel, bronze, brass and aluminum
- Large range of center-to-center dimensions: 8" to 48"
- Material options include 3/4", 1", and 1-1/4" dia.
- ADA Compliant



## AP300 SERIES ADJUSTABLE & CONFIGURABLE PULLS



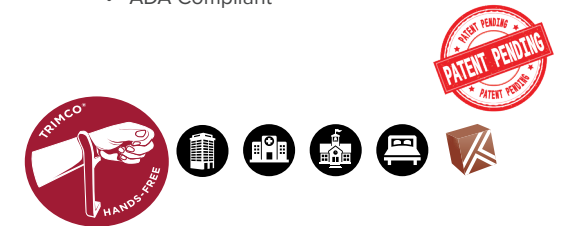
- Available with Healthy Hardware®  
Made from Copper Alloy.
- Adjustable and configurable standoffs are versatile for use across many different center-to-center configurations
- Configurable and customizable end caps are available in multiple sizes and finishes



## AP330 SERIES HANDS-FREE BENT ADJUSTABLE PULLS



- Hands-Free Pull
- Available with Healthy Hardware® Made from Copper Alloy.
- Adjustable and configurable standoffs are versatile for use across many different center-to-center configurations
- Simple replacement for current pulls
- ADA Compliant

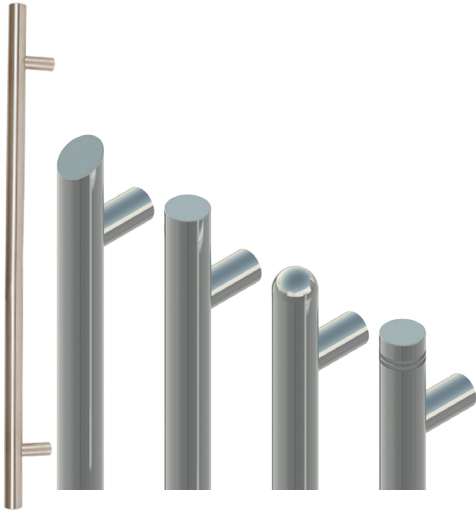


LEGEND



AVAILABLE IN HEALTHY HARDWARE®

AP400 SERIES  
ARCHITECTURAL LADDER PULLS



- Available with Healthy Hardware® Made from Copper Alloy.
- Manufactured from stainless steel, bronze, brass or aluminum
- Flexibility in design from straight or offset pulls to square, radius, angled, or groove ends\*
- Wide range of lengths available from 12" to over 9'
- Available in most architectural finishes
- Multiple mounting options for metal, wood and glass doors
- ADA Compliant



\* Healthy Hardware® only available in square ends

TIDAL SERIES  
HANDS-FREE ARM PULLS



- Hands-Free Solution
- Available with Healthy Hardware® Made from Copper Alloy.
- Slide Lock with interior and exterior indicators
- Extra Heavy-Duty construction for high-abuse applications
- ADA Compliant



PBT8000 SERIES  
EXIT DEVICE PUSH BAR COVERS

- Made with Healthy Hardware® Made from Copper Alloy.
- No hardware required for installation
- For 36" and 48" Von Duprin Exit Devices
- For 2'6", 3', and 4' Precision APEX 2000 Devices
- Custom lengths available





# PRODUCT INDEX CONT.

## UCT SERIES ULTIMATE COUNTERTOPS



- Healthy Hardware® – Keeps the World Healthy
- Help protect clients and employees from transmittal of harmful bacteria
- Made from Copper Alloy
- Available as configurable desk pads or custom engineered solutions



## UFP SERIES ULTIMATE FOOT PULLS



- Available with Healthy Hardware® Made from Copper Alloy
- Allows opening without use of hands
- Thru-bolted for maximum durability
- Includes 2 sexed bolts and 3 combo screws
- Two rubber bumpers for wall protection
- Made of marine grade stainless steel material or Healthy Hardware®
- Inquire for availability of other finishes
- Rubber bumpers for wall protection



## 9 SERIES MORTISE LOCK LEVER SETS



- Healthy Hardware® – Keeps the World Healthy
- Looks like stainless steel to match other hardware products
- Multiple functions available and can pair with many mortise lock manufacturers
- Manufactured in North America
- ADA compliant levers and thumbturn
- California Fire Marshall compliant options



## APC10 & 562 SERIES CLOSET & CABINET PULLS



- Available with Healthy Hardware® Made from Copper Alloy
- Manufactured from stainless steel, bronze, brass, or aluminum for long lasting durability
- Flexibility in design
- Wide range of lengths available
- Multiple mounting options for metal, wood, and glass doors





### 1035 & 1835 SERIES HANDS-FREE ULTIMATE PULLS



- Hands-Free Pull
- Available with Healthy Hardware®
- Made from Copper Alloy
- Manufactured in North America from stainless steel, bronze or brass for maximum durability
- Utilizes 1135 Ultimate Grip
- .050" Thick Pull Plate on 1035
- 1/8" Thick Push/Pull Plate on 1835
- Multiple sizes & Custom sizes available
- Can be mounted up or down
- ADA Compliant



### 1135 SERIES HANDS-FREE ULTIMATE GRIPS



- Healthy Hardware - Keeps the World Healthy
- Hands-Free Pull
- Extremely durable 2-point attachment method
- Can be mounted up or down
- Back-to-Back mounting available
- 6" Center-to-Center
- Available with copper alloy or stainless steel
- ADA compliant



### 1111 SERIES LARGE FLUSH CUP PULLS



- Non-handed construction manufactured in the USA from stainless steel, brass or bronze
- Functions easily, yet resists vandalism as smooth surfaces defies attachment by hooks, ropes, chains or other destructive devices
- Sturdy fasteners mate to welded posts for additional security
- Complies with Building Code Accessibility Standards for the handicapped
- Optional PVC coating resists heat and keeps pull cool in sunny environments
- Available in back-to-back sets and mates to all standard panic hardware



### 1700 SERIES PUSH/PULL BAR SETS



- Available with Healthy Hardware®  
Made From Copper Alloy
- Manufactured in North America from stainless steel, bronze or brass
- Options include 3/4", 1" and 1-1/4" diameter material and 10", 12" or 18" pulls
- Multiple mounting options for metal, wood and glass doors
- Must specify CTC on Push Bars
- Custom sizes and finishes also available





# PRODUCT INDEX CONT.

## 1191 SERIES OFFSET GRIPS



- Available with Healthy Hardware® Made from Copper Alloy
- Wide array of material sizes and dimensions to meet any design specification
- Manufactured from stainless steel, bronze, brass and aluminum
- Large range of center-to-center dimensions: 8" to 18"
- Material options 3/4", 1", to 1-1/4" dia.



## 1194 SERIES STRAIGHT GRIPS



- Available with Healthy Hardware® Made from Copper Alloy
- Wide array of material sizes and dimensions to meet any design specification
- Manufactured from stainless steel, bronze, brass and aluminum for durability and long life
- Large range of center-to-center dimensions: 6" to 18"
- Material options include 1/2" dia. to 1-1/4" dia. round, 3/4 round, and half-round stock



## 1198 SERIES ADA GRAB BARS



- Available with Healthy Hardware® Made from Copper Alloy
- 1-1/4" diameter grab bars
- Multiple sizes ranging from 12" to 48"
- Concealed mounting



## 1001 SERIES HEAVY-DUTY PUSH PLATES



- Available with Healthy Hardware® Made from Copper Alloy
- Manufactured in the United States
- Heavy-Duty .050" stainless steel, brass, bronze or aluminum material
- 1/8" plastic option also available
- Standard sizes 3"x12", 3-1/2"x15", 4"x16", 6"x16" and 8"x16"
- Custom sizes also available
- Pencil beveled on all four sides



LEGEND



AVAILABLE IN HEALTHY HARDWARE®

1562 SERIES  
HOSPITAL LATCHES



- Healthy Hardware® – Keeps the World Healthy.
- Lever pads and latch covers manufactured from bronze, brass or antimicrobial copper material are suitable for heavy-duty use
- A nylon insert in the latchbolt face provides silent latch action
- Compact - less than 50% the projection of other Push/Pull latches
- ADA Compliant



1096 & 1097 SERIES  
VANDAL-RESISTANT PULLS



- Mated to Exit Devices or Mortise Locks
- Available in Healthy Hardware®
- Manufactured from 1/8" type 316 marine grade stainless steel, brass or bronze.
- Available with Astragal (1096) or without (1097)
- Offered with or without cylinder prep
- Eliminates potential for illegal chaining of doors
- ADA Compliant
- Meets California State Prison strength tests



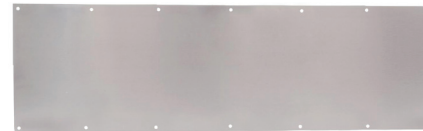
LDH100 SERIES  
LOCKDOWN HARDWARE®



- Simple, one-touch mechanical lockdown for exit devices
- Cost-effective, aftermarket or new construction solution
- Does not require a key or hex-wrench to lock down doors
- Durable die-cast construction
- Easy installation requires no special tools or removal of the panic device from the door
- Works with hex or cylinder dogging devices
- ADA compliant



K SERIES  
ARMOR & KICK  
PROTECTION PLATES



- Manufactured in the United States
- Available in Healthy Hardware®
- Heavy-Duty .050" stainless steel, brass, bronze or aluminum material standard
- Other materials including .038", .062", .125" and custom options available
- Pencil beveled on all four sides standard
- Options include UL labeling, heavy bevel, countersinking and security screws
- Custom cutouts, sizes and shapes available







FOR MORE INFORMATION ABOUT TRIMCO PRODUCTS,  
PLEASE CONTACT TRIMCO'S CUSTOMER SERVICE TEAM.

**HEADQUARTERS**

1351 Rocky Point Drive  
Oceanside, CA 92056

**CUSTOMER SERVICE + ORDERS**

[csr@trimcohardware.com](mailto:csr@trimcohardware.com)

323.262.4191 Phone  
800.637.8746 Fax  
323.264.7214 Local Fax

**QUOTATIONS**

[quotes@trimcohardware.com](mailto:quotes@trimcohardware.com)

877.786.8387 Toll Free Fax  
323.264.7214 Local Fax

**LITERATURE + CATALOGS**

[marketing@trimcohardware.com](mailto:marketing@trimcohardware.com)

**SALES**

Visit our website to find your local Trimco sales representative.

**FOLLOW TRIMCO ON SOCIAL MEDIA FOR THE LATEST UPDATES!**



Instagram

[linkedin.com/company/trimco](https://linkedin.com/company/trimco)

Trimco Hardware

@TrimcoHardware

@TrimcoHardware

@TrimcoHardware

TRIMCOHARDWARE.COM